



CMHA HPE Strategic Plan 2023 - 2027

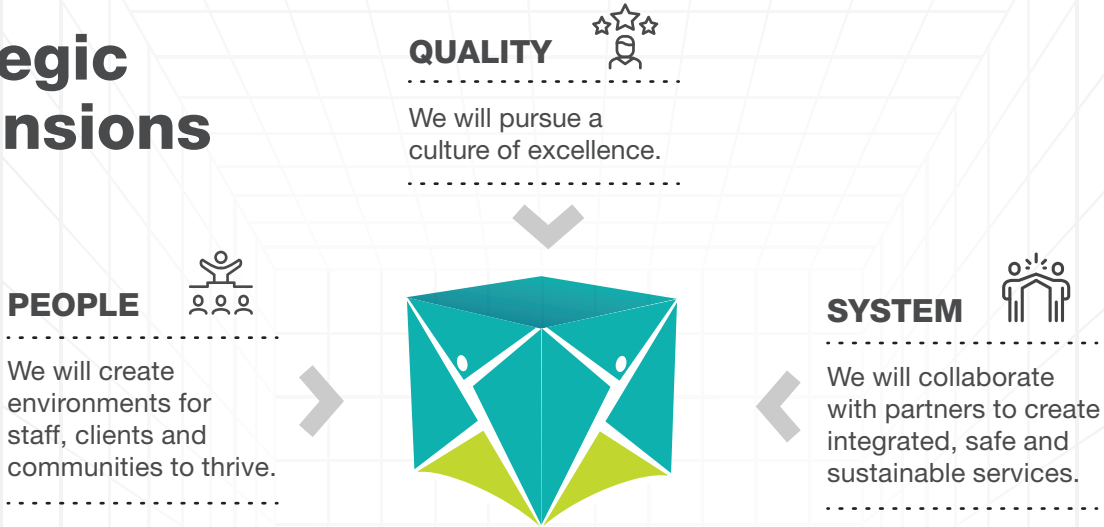
VISION

Across Hastings and Prince Edward Counties, everyone has the opportunity to live healthy lives and achieve their full potential.

MISSION

In collaboration with our community, we are dedicated to addressing addictions and mental health challenges through proactive advocacy, prevention, and the delivery of effective and accessible services.

Strategic Dimensions



Four Foundational Principles



VALUES

We embrace these core values to achieve our vision and mission for our staff, clients, and community!



INNOVATION

We listen, learn, and seek out new ideas to adapt and grow



PEOPLE

We promote a sense of belonging by being compassionate, inclusive, and caring for ourselves and others



TEAMS

We collaborate, inspire, and empower each other to bring our best selves